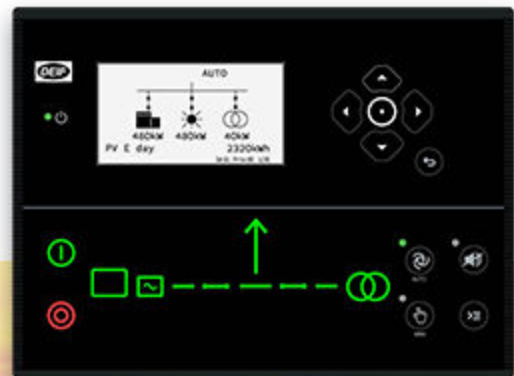


# iE 150 Solar

4921240728A

## Data sheet



## 1. iE 150 Solar

<b>1.1 About</b>	<b>3</b>
1.1.1 Software packages	3
<b>1.2 Single line drawings for single solar controllers</b>	<b>3</b>
<b>1.3 Single-line application diagrams for PMS</b>	<b>6</b>
1.3.1 Off-grid power management	6
1.3.2 Grid-tied power management	8
<b>1.4 Power management</b>	<b>10</b>
1.4.1 Introduction	10
1.4.2 Power management plant modes	10
1.4.3 Power management features	10
<b>1.5 Single-line application diagrams for open PMS</b>	<b>11</b>
1.5.1 Off-grid open PMS	11
1.5.2 Grid-tied open PMS	12
<b>1.6 Open PMS</b>	<b>13</b>
<b>1.7 Display, buttons and LEDs</b>	<b>15</b>
<b>1.8 Typical wiring for solar controller</b>	<b>16</b>
<b>1.9 Functions and features</b>	<b>17</b>
1.9.1 Solar functions	17
1.9.2 General controller functions	18
1.9.3 Supported photovoltaic systems	19
1.9.4 Emulation	19
1.9.5 Easy configuration with the utility software	20
<b>1.10 Protections overview</b>	<b>20</b>

## 2. Compatible products

<b>2.1 Touch display unit: TDU</b>	<b>22</b>
<b>2.2 Power meters</b>	<b>22</b>
<b>2.3 Power measurements from gensets</b>	<b>22</b>
<b>2.4 Power management</b>	<b>22</b>
<b>2.5 Open PMS</b>	<b>23</b>
<b>2.6 Remote monitoring service: Insight</b>	<b>23</b>
<b>2.7 Additional inputs and outputs</b>	<b>23</b>
<b>2.8 Additional operator panel, AOP-2</b>	<b>23</b>
<b>2.9 Other equipment</b>	<b>23</b>
<b>2.10 Controller types</b>	<b>24</b>

## 3. Technical specifications

<b>3.1 Electrical specifications</b>	<b>25</b>
<b>3.2 Environmental specifications</b>	<b>27</b>
<b>3.3 UL/cUL Listed</b>	<b>28</b>
<b>3.4 Communication</b>	<b>28</b>
<b>3.5 Approvals</b>	<b>29</b>
<b>3.6 Dimensions</b>	<b>30</b>
<b>3.7 Spare parts and accessories</b>	<b>30</b>

## 4. Legal information

<b>4.1 Software version</b>	<b>31</b>
-----------------------------	-----------

# 1. iE 150 Solar

## 1.1 About

The iE 150 Solar controller is a fully flexible controller to control and protect a photovoltaic (PV) system with up to 32 inverters. Use iE 150 Solar to add PV to an existing or new site. You can have up to 16 iE Solar controllers working together.

Use iE 150 Solar as a single controller to add PV power and a mains connection (optional) to an existing site.

In a power management system (PMS), use iE 150 Solar for seamless integration of PV power with other power sources (including battery/storage, gensets and/or mains). To save fuel, the PMS maximises PV penetration, while making sure that the gensets meet their minimum load requirements. The PMS also makes sure that spinning reserve requirements are met, and responds quickly to load and weather changes.

For sites with genset and/or mains controllers from other suppliers, use iE 150 Solar with open PMS to add solar, battery/storage and/or mains controllers.

The controller has built-in AC measurements. There are two sets of voltage measurements (three phases, and (optional) the neutral phase), and one set of current measurements (three phases). There is also a 4th current measurement that can be used to measure mains power. The controller can receive power measurements from power meters, genset communication, and/or transducers.

Operators can easily control the system from the display unit. Alternatively, use the communication options to connect to an HMI/SCADA system.

### 1.1.1 Software packages

The controller must have the **Premium** software package.

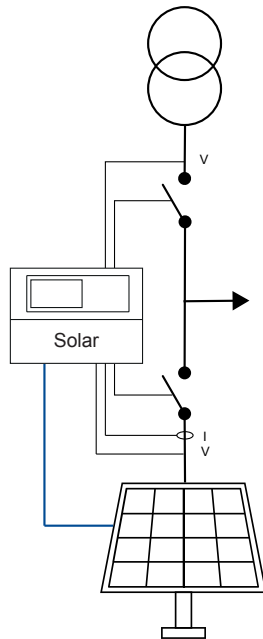
## 1.2 Single line drawings for single solar controllers

The controller can operate as a single controller, that is, without power management communication to other controllers. Single controllers are particularly useful for brownfield applications. Single controllers can also be used in greenfield applications.

### Software variants

Single solar controller	Premium
External gensets	16
External mains	16
Photovoltaic breaker (PVB) control	●
Mains support <ul style="list-style-type: none"><li>• Mains breaker</li><li>• Parallel operation</li><li>• Measurements from a mains power meter</li></ul>	● ● ●

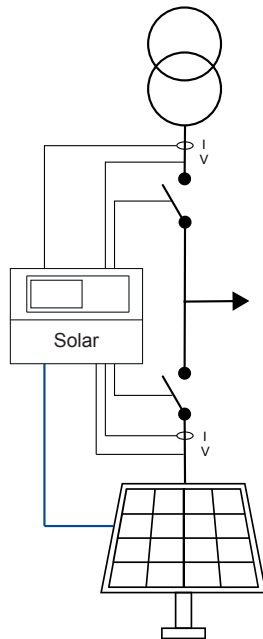
## Single solar controller with fixed power



**Fixed power:** When given a signal, the controller starts, synchronises, and connects the PV. After the breaker closes, the controller ramps up the load to the set point level. When the stop command is given, the PV breaker is de-loaded, opened and the PV is stopped.

The solar controller can also control the mains breaker. For fixed power, the controller does not need power measurements from other power sources.

## Single solar controller with peak shaving, and mains power export

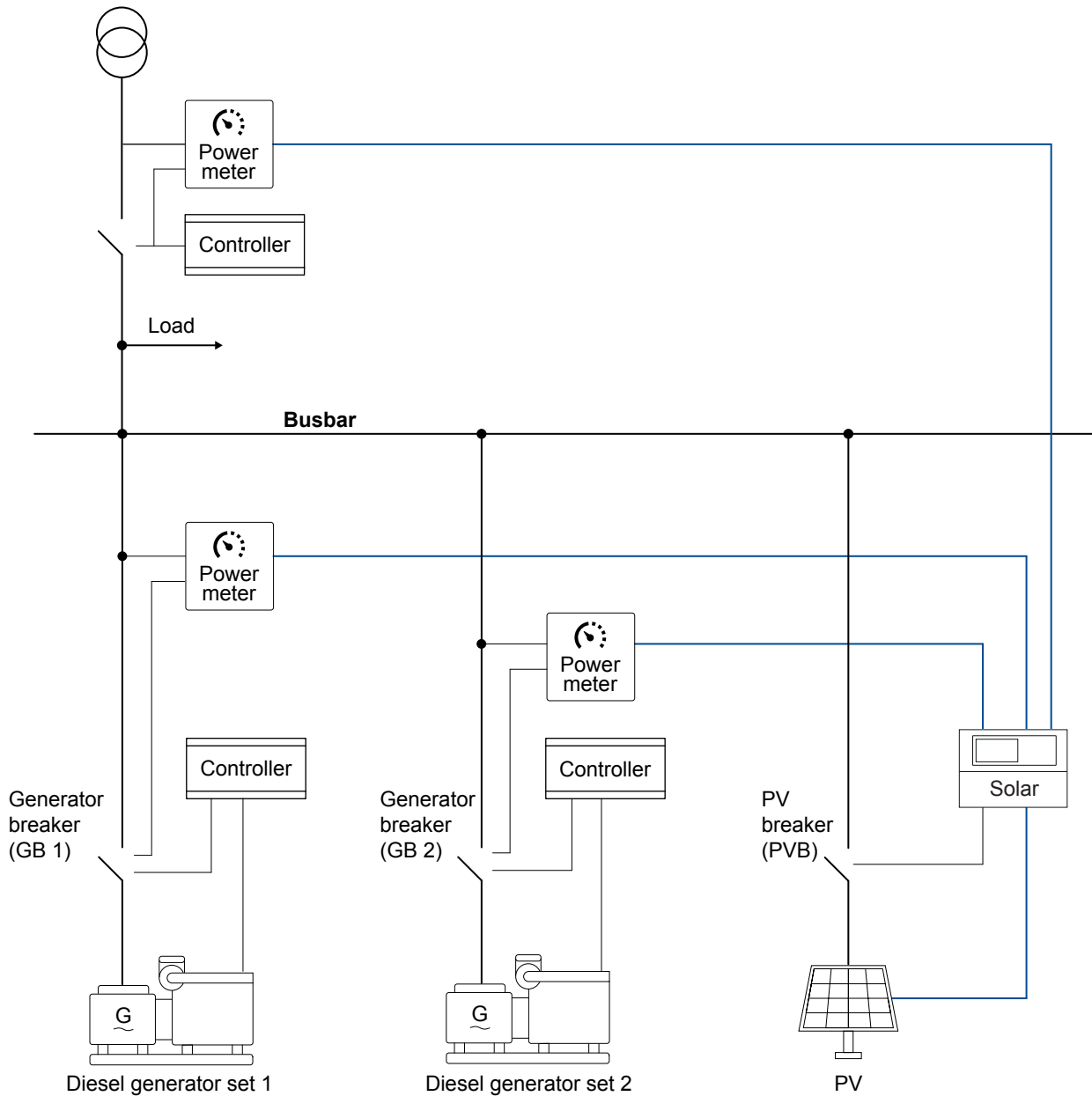


- **Peak shaving:** Power plant where the PV supplies the peak load demand and runs parallel to mains.
- **Mains power export:** PV with fixed kW set point (excluding increasing load).

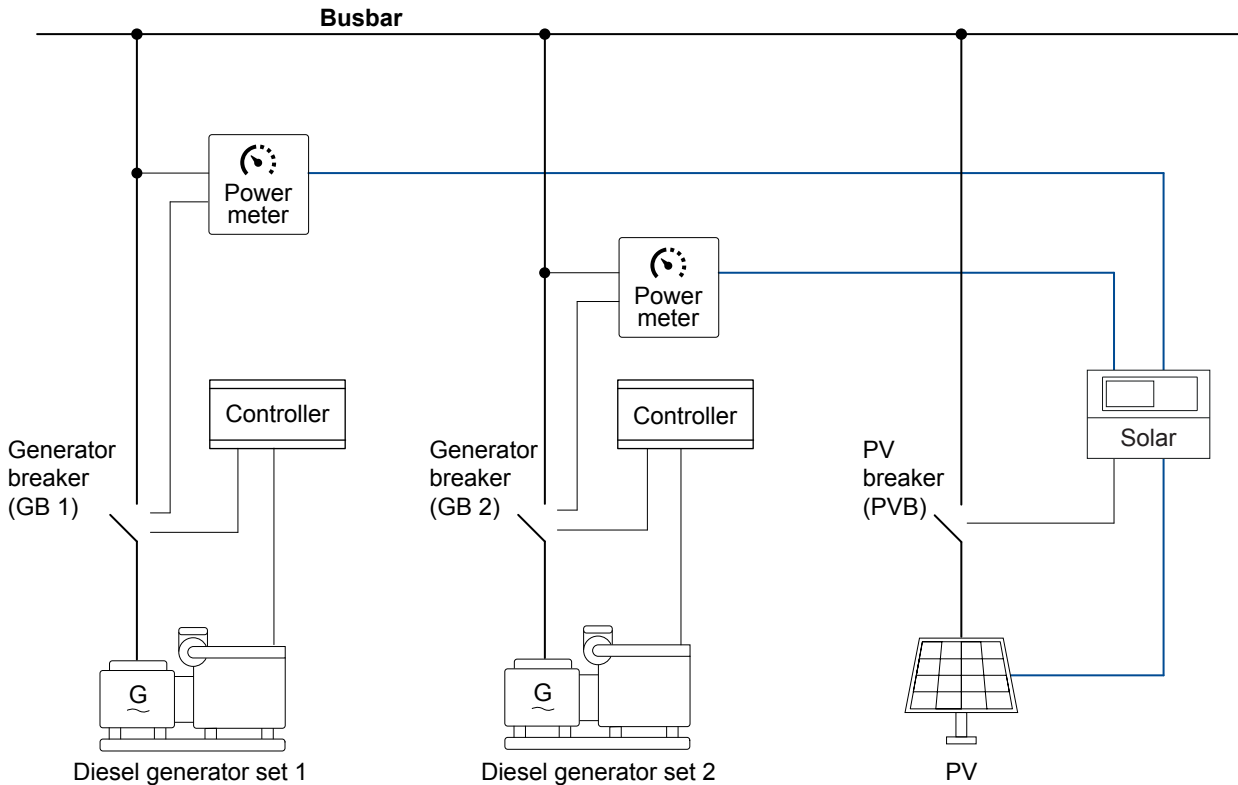
The solar controller calculates the power set points for the PV power plant based on power readings and breaker positions.

- **Only one mains:** You can use the controller's 4th current transformer terminals to measure the mains power.
- **Multiple or other power sources:** You must use power meters, communication, or transducers.

## Adding a single solar controller to an existing grid-tied plant (brownfield application)



## Adding a single solar controller to an existing off-grid plant (brownfield application)



## 1.3 Single-line application diagrams for PMS

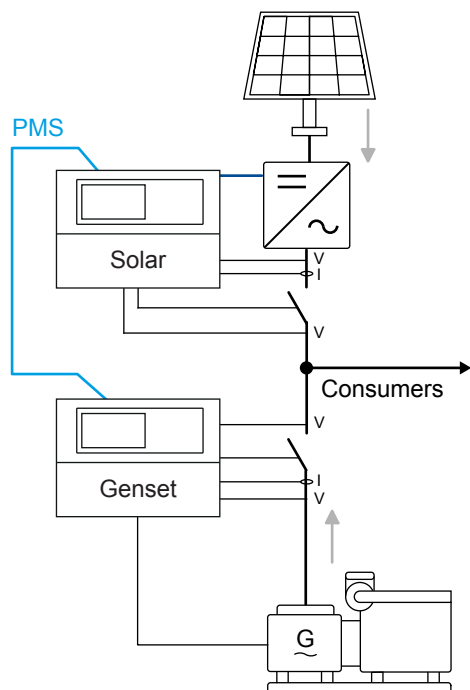
### 1.3.1 Off-grid power management

The controllers provide flexibility for off-grid applications.

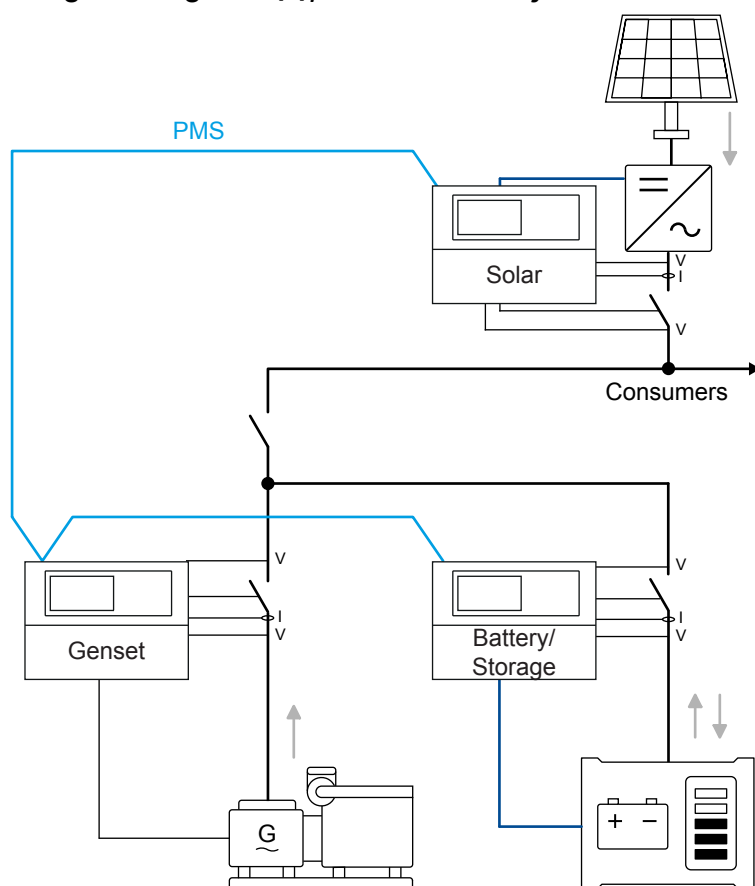
The controller can work with other DEIF controllers to manage the PV power with other power sources. When used with a genset, the controller uses the genset power measurements to calculate the set points for the PV power. When used with battery/storage, the available PV power is combined with the charge/discharge scheme to determine the set point for the PV power.

These controller configurations can be used in greenfield applications. To use these configurations in brownfield applications, all the controllers must be replaced with DEIF controllers.

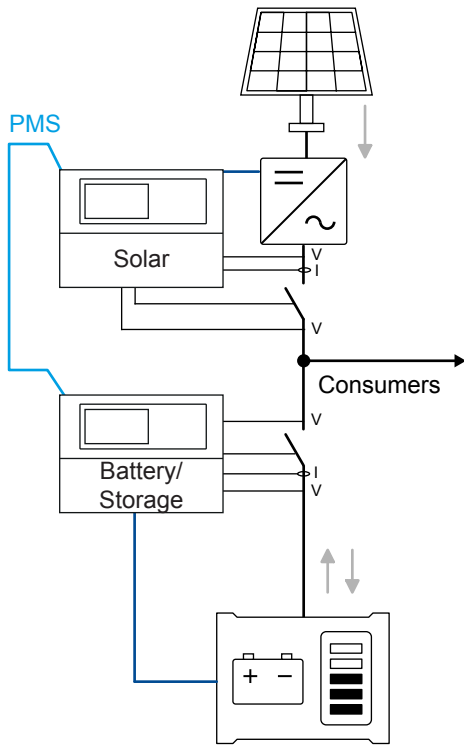
## Off-grid with genset(s) and solar



## Off-grid with genset(s), solar and battery



## Off-grid with solar and battery



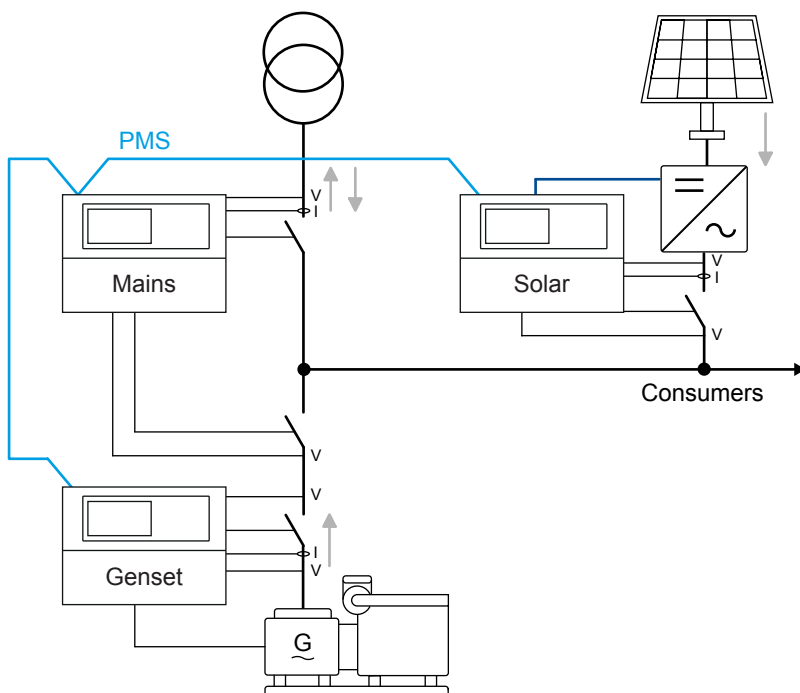
### 1.3.2 Grid-tied power management

The controllers can integrate seamlessly into grid-tied applications. This includes power management applications with other DEIF controllers using CAN bus communication.

The controller can feed surplus PV energy to the grid, or charge the energy storage system (ESS). Alternatively, the controller can regulate the PV production to match the self-consumption, thereby preventing any feed-in of PV power to the grid.

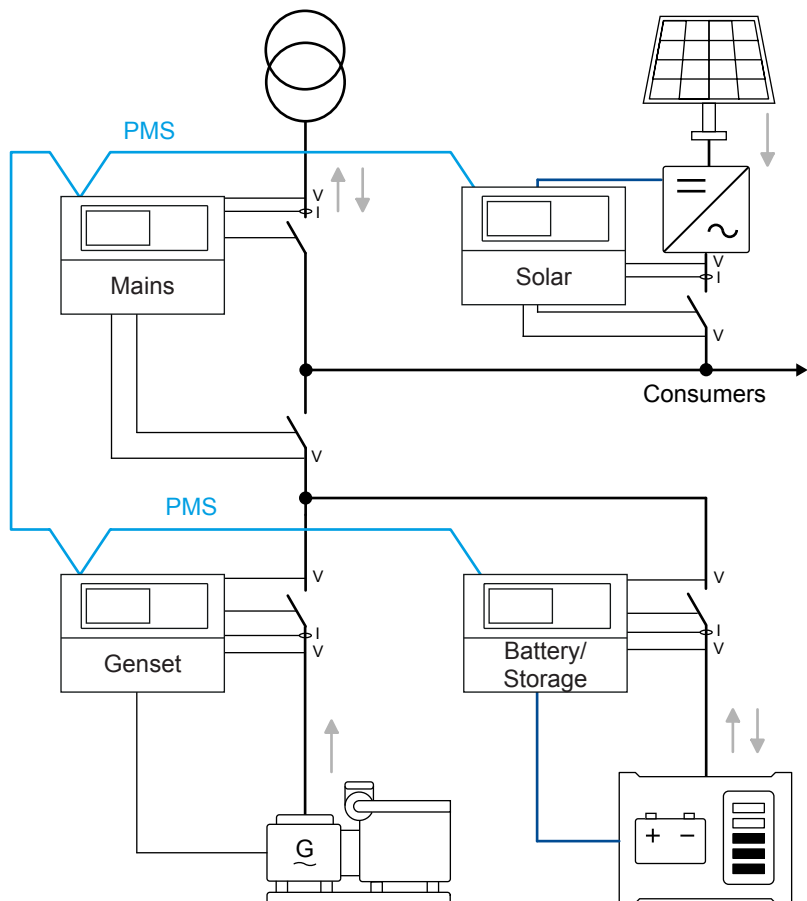
These controller configurations can be used in greenfield applications. To use these configurations in brownfield applications, all the controllers must be replaced with DEIF controllers.

## Grid-tied solar and genset

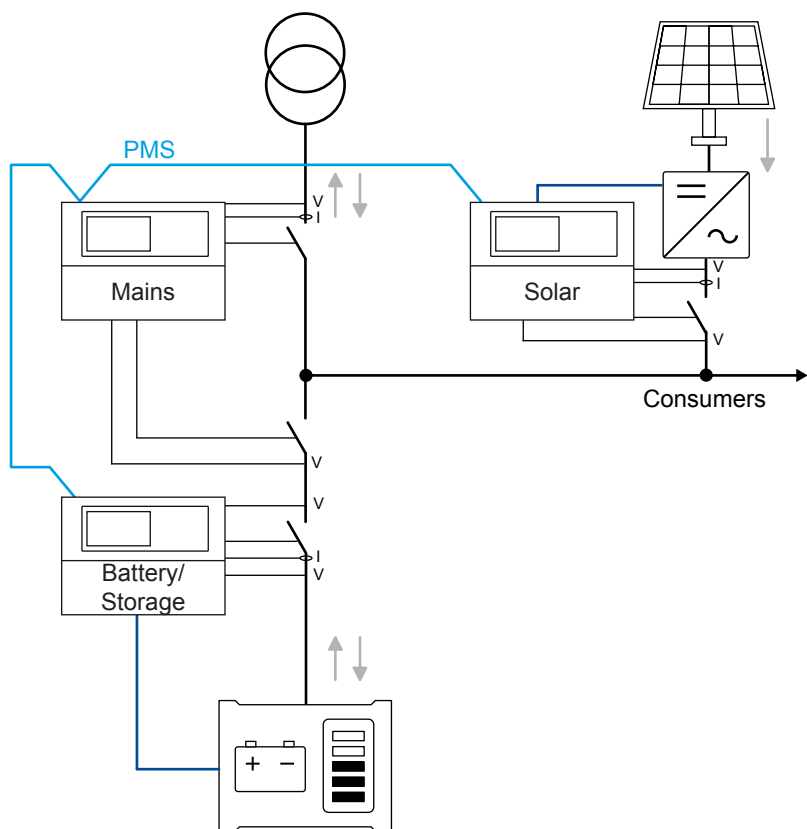




## Grid-tied solar, genset and battery



## Grid-tied solar and battery



## 1.4 Power management

### 1.4.1 Introduction

The power management system automatically supplies the power that is necessary for the load efficiently, safely and reliably.

The power management system:

- Automatically maximises PV power
- Automatically starts and stops generators
- Automatically closes and opens breakers
- Optimises the fuel consumption
- Balances the loads in the system
- Deploys plant logic
- Makes sure that the system is safe

You can monitor the complete power management system from a graphical supervision page in the utility software. You can also see running status, hours in operation, breaker status, the condition of the mains and busbars, fuel consumption, and so on.

#### Multi-master system

The power management system is a multi-master system, for increased reliability. In a multi-master system all vital data is transmitted between the controllers, so that all the controller know the power management status (calculations and position) in the application. As a result, the application does not have a single master controller.

#### Busbar sections

The plant can be divided by one to eight bus tie breakers. This makes it possible to run different sections of the plant in different plant modes. For example, you can use this to test a section, or to divide the load into primary and secondary loads.

### 1.4.2 Power management plant modes

The plant modes are configurable and can be changed at any time. All modes can be combined with Automatic Mains Failure mode (AMF). You can use the controllers for the following applications:

Standard plant modes	Applications
Island mode	Power plant with synchronising generators.
Automatic Mains Failure	Critical power/emergency standby plants, black start generator.
Fixed power	Power plant with fixed kW set point (including building load).
Peak shaving	Power plant where generator supplies peak load demand paralleled to the mains.
Load take-over	Plant mode where the load is moved from mains to generator. For example, peak demand periods, or periods with a risk of power outages.
Mains power export	Power plant with fixed kW set point (excluding building load).

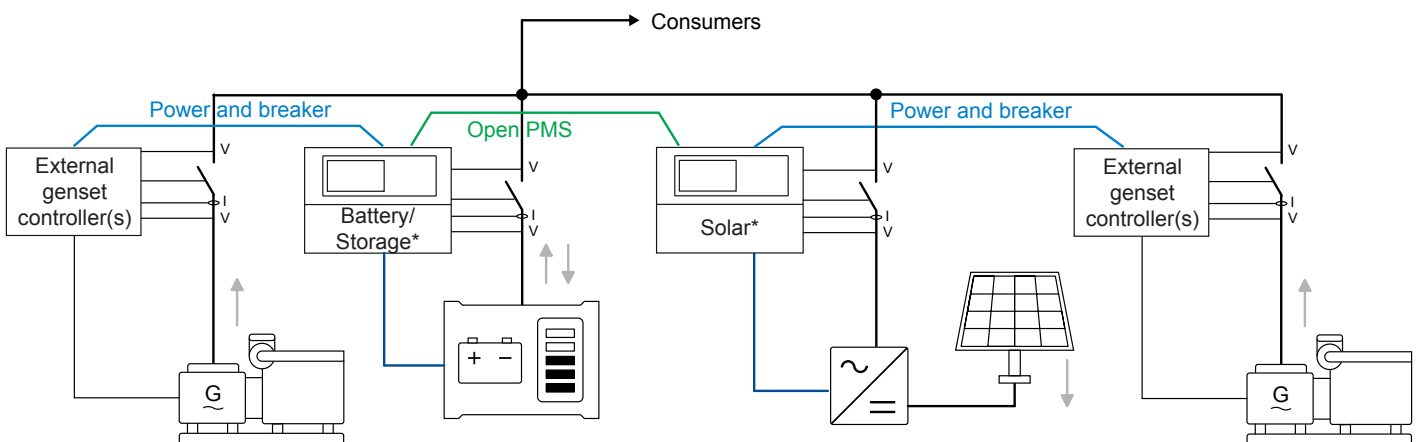
### 1.4.3 Power management features

Power management features	Premium
Power management operation*: <ul style="list-style-type: none"><li>• Number of generator controllers</li><li>• Number of mains controllers</li><li>• Number of BTB controllers</li></ul>	32 32 8

Power management features	Premium
• Number of solar controllers	16
• Number of battery/storage (BESS) controllers	16
• Number of load controllers (ALC-4)	8
Hybrid ready (compatible with battery/storage and solar controllers)	●
Genset and battery/storage controllers: Ground relay management	●
Load controller support (compatible with ALC-4)	●
Genset load-dependent start and stop	●
EasyConnect	●
Asymmetrical genset load sharing	●
N + X (Secured mode)	●
Genset priority selection:	
• Manual	●
• Running hours	●
• Fuel optimisation	●
Safety stop of genset	●

<b>ID 1 to 24</b>	<b>ID 25 to 32</b>	<b>ID 33 to 40</b>
Genset (1 to 32)		
Mains (1 to 32)		
	Solar (25 to 40)	
	Battery/Storage (25 to 40)	
	ALC-4 (25 to 40)	
		BTB (33-40)
		External BTB (33-40)

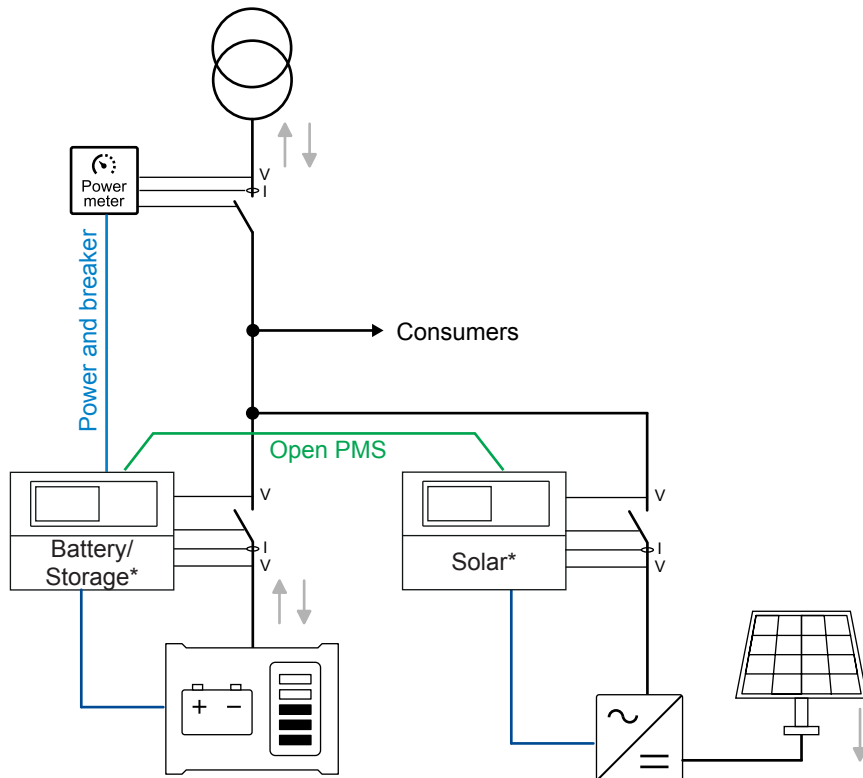
### 1.5.1 Off-grid open PMS



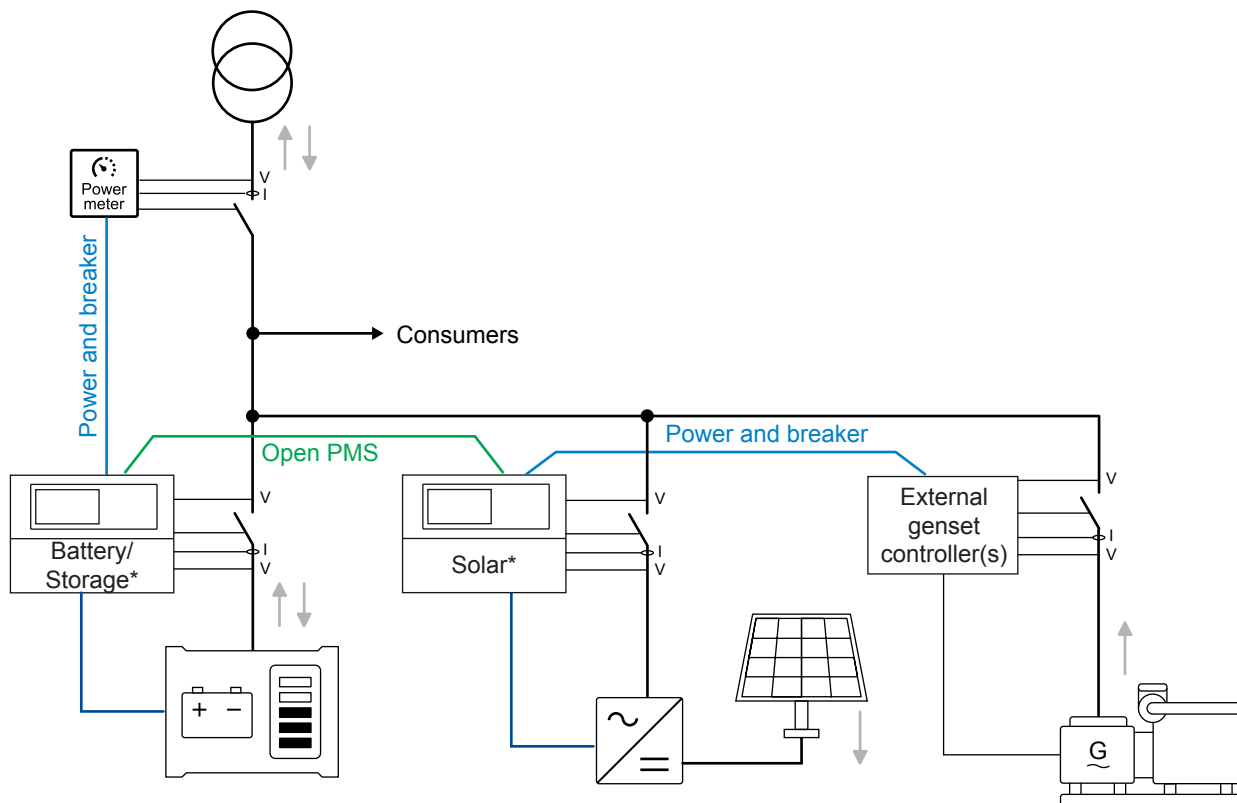
**NOTE** \* You can use multiple controllers in the application. Power measurements can be connected to the closest battery/storage or solar controller.

## 1.5.2 Grid-tied open PMS

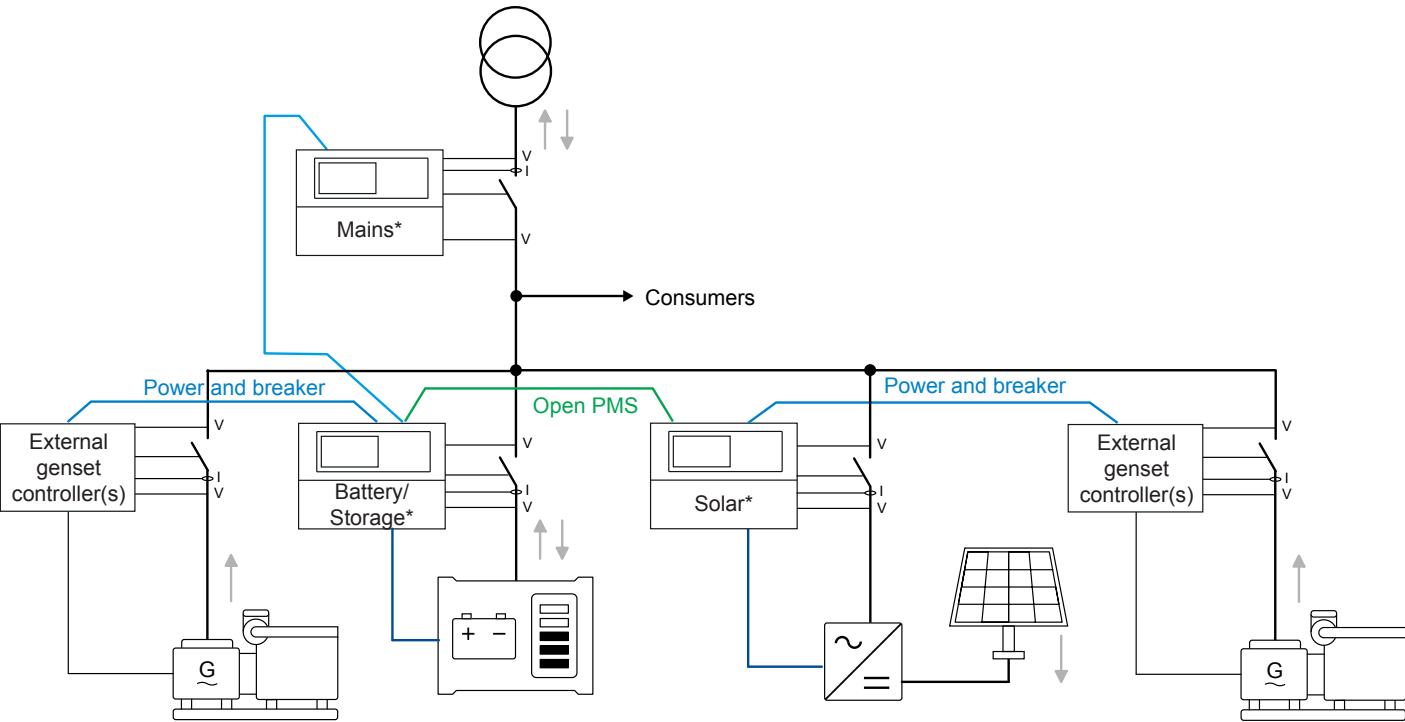
### Grid-tied solar, battery and external mains



### Grid-tied solar, battery, external genset(s) and external mains



Grid-tied solar, battery, mains and external genset(s)



**NOTE** \* You can use multiple controllers in the application. Power measurements can be connected to the closest battery/ storage or solar controller.

1.6 Open PMS

Open PMS is a power management system that consists of battery and/or solar controllers. Open PMS can also include a mains controller. The battery and/or solar controller(s) get power measurements from the externally controlled power source(s). You can therefore use open PMS to add power management to a brownfield application with third party gensets.

Open PMS automatically supplies the power that is necessary for the load efficiently, safely and reliably:

- Automatically maximises PV power
- Automatically optimises ESS power
- Automatically closes and opens breakers
- Balances the loads in the system
- Deploys logic

The open PMS operating data can be shown graphically on the controller display. You can also monitor open PMS from a graphical supervision page in the utility software.

Open PMS features

Open PMS features	Premium
Power management operation limits: <ul style="list-style-type: none"><li>• External generator controllers per battery/solar controller</li><li>• Mains controllers*</li><li>• External mains connections</li><li>• Battery/storage (BESS) controllers*</li><li>• Solar controllers*</li></ul>	16 32 1 16 16
EasyConnect	●
External sources included in the available power: <ul style="list-style-type: none"><li>• Supply the busbar load</li><li>• Charge batteries</li></ul>	● ● ●

Open PMS features	Premium
• Minimum and optimal genset load	●
Global or local start of external genset(s)	●

#### \*Restrictions on controllers

ID 1 to 24	ID 25 to 32	ID 33 to 40
Mains (1 to 32)		
	Solar (25 to 40)	
	Battery/Storage (25 to 40)	

#### Plant modes with a mains controller

With a mains controller, open PMS supports:

- Configurable mains power set point
- Configurable mains operating mode
- Auto-start signal for the application to the mains controller
- Standard mains controller PMS features, including cos phi set points, and mains breaker control

Standard plant modes	Applications
Island mode	Power plant with synchronising generators.
Automatic Mains Failure	Critical power/emergency standby plants, black start generator.
Fixed power	Power plant with fixed kW set point (including building load).
Peak shaving	Power plant where generator supplies peak load demand paralleled to the mains.
Load take-over	Plant mode where the load is moved from mains to generator. For example, peak demand periods, or periods with a risk of power outages.
Mains power export	Power plant with fixed kW set point (excluding building load).

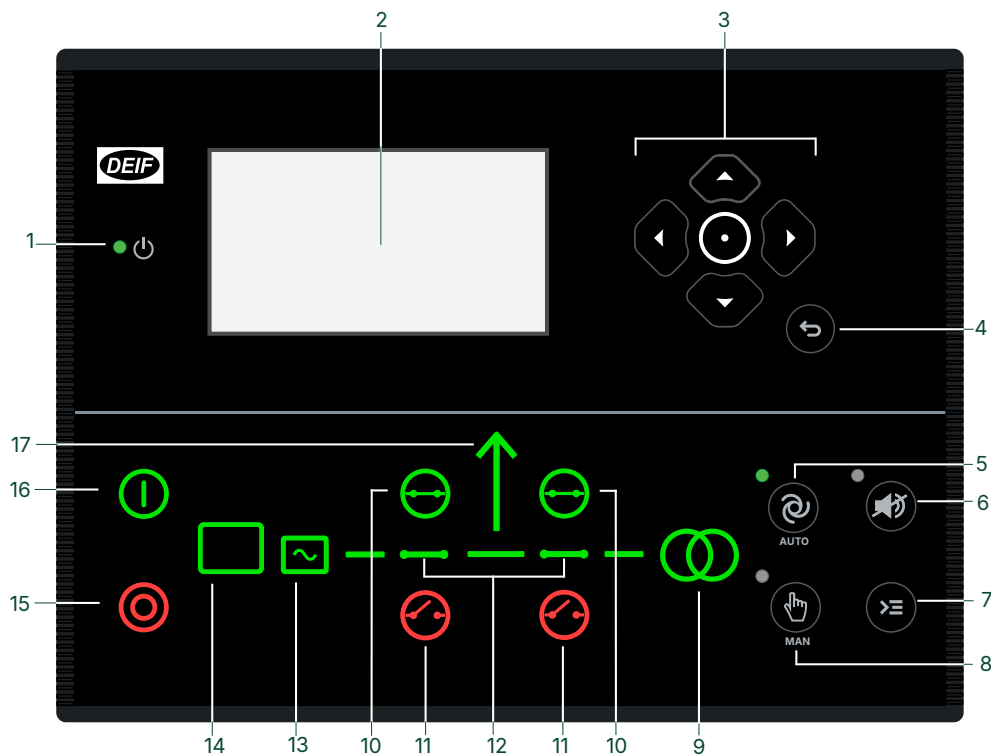
#### Plant modes with an external mains

The battery or solar controller that is connected to the external mains operates as a *Mains lite* controller and controls the mains mode.

Standard plant modes	Applications
Fixed power	Power plant with fixed kW set point (including building load).
Peak shaving	Power plant where generator supplies peak load demand paralleled to the mains.
Mains power export	Power plant with fixed kW set point (excluding building load).

**NOTE** For an open external mains breaker, open PMS cannot synchronise so that the mains breaker can close. That is, open PMS runs in island mode and cannot back sync.

## 1.7 Display, buttons and LEDs



No.	Name	Function
1	Power	Green: The controller power is ON. OFF: The controller power is OFF.
2	Display screen*	Resolution: 240 x 128 px. Viewing area: 88.50 x 51.40 mm. Six lines, each with 25 characters.
3	Navigation	Move the selector up, down, left and right on the screen.
	Enter button	Go to the Menu system. Confirm the selection on the screen.
4	Back button	Go to the previous page.
5	AUTO mode	The controller automatically starts and stops (and connects and disconnects) the PV, and automatically controls the power. No operator actions are needed.
6	Silence horn	Stops an alarm horn (if configured) and enters the Alarm menu.
7	Shortcut menu	Access the General shortcuts, Jump menu, Mode selection, and Lamp test.
8	MANUAL mode	The operator or an external signal can also open and close the PV breaker. Automatic controller actions are not possible.  The controller automatically synchronises before closing a breaker, and automatically de-loads before opening a breaker.
9	Mains symbol	Green: Mains/busbar voltage and frequency are OK. The controller can synchronise and close the breaker. Red: Mains/busbar voltage failure.
10	Close breaker	Push to close the breaker.





**NOTE** RS-485 port 1 has galvanic isolation, and RS-485 port 2 does not have galvanic isolation. Port 1 is recommended for communication with the solar inverter.

Fuses:

- F1: 2 A DC max. time-delay fuse/MCB, c-curve
- F2: 6 A DC max. time-delay fuse/MCB, c-curve
- F3: 4 A DC max. time-delay fuse/MCB, b-curve
- F4, F5: 2 A AC max. time-delay fuse/MCB, c-curve

## 1.9 Functions and features

### 1.9.1 Solar functions

#### Spinning reserve

If there is a mains connection, the power management system can start and stop the genset(s) to provide a spinning reserve. The spinning reserve can be a percentage of the PV power production or the mains import.

#### Ideal for self-consumption applications

While in grid parallel mode, the controller can feed surplus PV energy to the grid and generate profit in accordance with grid operator feed-in tariffs. Alternatively, the controller can regulate the PV production to match the self-consumption, thereby preventing any feed-in of PV power to the grid if prohibited by grid operator regulations.

Solar functions	Premium
Number of inverters	32*
Inverters with TCP/IP communication: <ul style="list-style-type: none"><li>• Separate IP addresses and/or multiple inverters at the same node</li><li>• Select TCP or UDP</li></ul>	● ●
Photovoltaic breaker (PVB) control	●
Power management	●
Irradiance sensor	●
Weather station	●
Reactive power control	●
Inverter monitoring	●
Inverter start/stop logic	●
PV integration	●
Solar power load calculation	●
Ensure a minimum genset load	●
PV power counters (kWh)	●
Mains import/export power counters (kWh)	●
Get measurements from a PV power meter (optional)	●
Configurable dynamic power offset for the solar power reference (optional)	●

**NOTE** \* From software version 1.17, the controller can have up to 32 TCP/IP connections, or 32 RTU connections.



#### More information

If you need to use weather forecasts and/or redundant controllers (option T1), use an **ASC-4 Solar controller**.



### More information

For a system that includes gensets, up to 16 inverters, and a mains connection, you can use a **Hybrid genset controller**. If there is a mains, there can be one genset. If there is no mains, there can be up to two synchronising gensets, or up to four non-synchronising gensets. See the **Hybrid genset controller Data sheet**.

## 1.9.2 General controller functions

AC functions	Premium
Sets of nominal settings	4
Select the AC configuration: <ul style="list-style-type: none"> <li>• 3-phase/3-wire</li> <li>• 3-phase/4-wire</li> <li>• 2-phase/3wire (L1/L2/N or L1/L3/N)</li> <li>• 1-phase/2-wire L1</li> </ul>	● ● ● ●
100 to 690 V AC (selectable)	●
CT -/1 or -/5 (selectable)	●
4th current measurement: Power from a Mains, Genset, or PV	●

General functions	Premium
Emulation for testing and front load commissioning	●
Built-in test sequences (Simple test, Load test, Full test, and Auxiliary supply test)	●
PLC logic (M-Logic)	80 lines
Counters, including: <ul style="list-style-type: none"> <li>• Breaker operations</li> <li>• kWh meter (day, week, month, total)</li> <li>• kvarh meter (day, week, month, total)</li> </ul>	● ● ● ●
General purpose PID regulators (2 × built-in analogue outputs can use these PID regulator references)	6
4 additional analogue outputs (using 2 × IOM 230)	●
Simple load shedding and adding	●
Changeable controller type	●

Setting and parameter functions	Premium
EasyConnect (Quick setup)	●
User permission level	●
Password-protected setup	●
Trending on USW	●
Event logs with password, up to 500 entries	●

Display and language functions	Premium
Supports multiple languages (including Chinese, Russian, and other languages with special characters)	●
20 configurable graphical screens	●
Graphical display with six lines	●
Parameters can be changed on the display unit	●

Modbus functions	Premium
Modbus RS-485	●
Modbus TCP/IP	●
Configurable Modbus area	●

### 1.9.3 Supported photovoltaic systems

The controller supports a wide range of PV systems, power meters, and weather stations. The controllers are compatible with photovoltaic (PV) systems from a wide range of manufacturers.

#### SunSpec compliance

All DEIF hybrid controllers are compliant with the SunSpec standards (see [sunspec.org](https://sunspec.org)). DEIF controllers are therefore compatible with new inverters that use the generic SunSpec protocol.

#### Testing

Many PV inverter makers use the same protocol for a wide range of their products. New PV inverters often comply with the older protocol. If a specific inverter is not listed, but the maker is listed, there is a good chance that the DEIF controller is compatible.

If your PV inverter is not listed, DEIF can help to confirm compliance using the Modbus protocol documentation.

#### Implementing new protocols

Since new systems are launched every year, DEIF developers continuously implement new protocols. If your system is not listed, please contact DEIF. We can work with you to quickly implement the required protocol.



#### More information

See **Application note, DEIF hybrid controller compatibility** for the list of the supported protocols.

### 1.9.4 Emulation

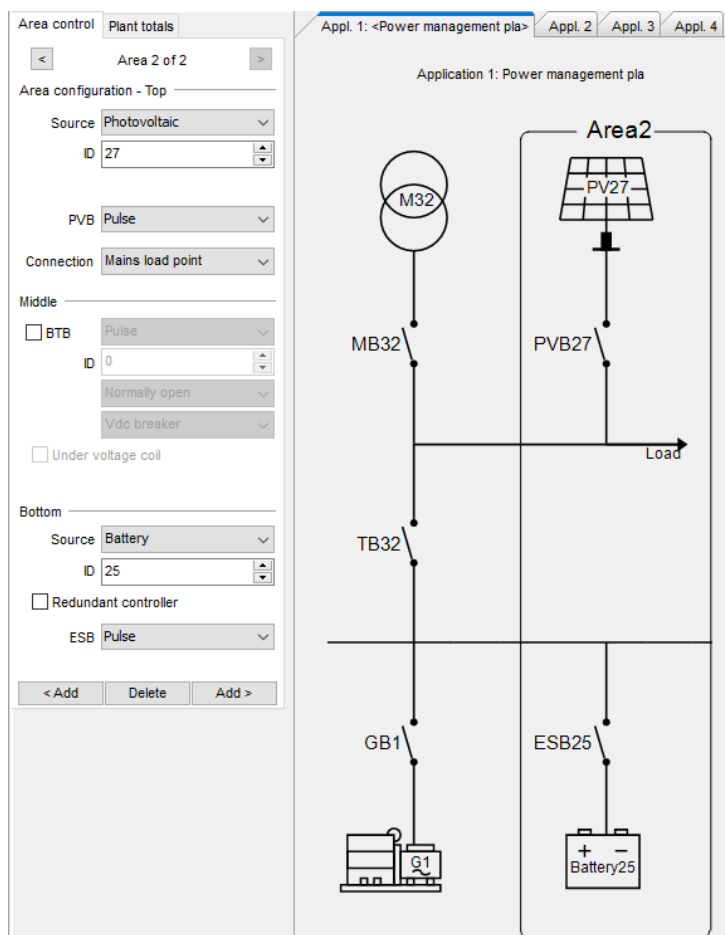
The controller includes an emulation tool to verify and test the functionality of the application, for example plant modes and logics, breaker handling, and generator operation.

Application emulation is useful for training, customising plant requirements and for testing basic functionality that needs to be set up or verified.

## 1.9.5 Easy configuration with the utility software

Set up an application easily with a PC and the utility software.

You can also use the utility software to quickly configure the inputs, outputs, and parameters.



## 1.10 Protections overview

Protections	Alarms	ANSI	Operate time
Reverse power	2	32R	<200 ms
Fast over-current	2	50P	<40 ms
Over-current	4	50TD	<200 ms
Voltage-dependent over-current	1	50V	
Over-voltage	2	59	<200 ms
Under-voltage	3	27P	<200 ms
Over-frequency	3	81O	<300 ms
Under-frequency	3	81U	<300 ms
Unbalanced voltage	1	47	<200 ms
Unbalanced current	1	46	<200 ms
Under-excitation or reactive power import	1	32RV	<200 ms
Over-excitation or reactive power export	1	32FV	<200 ms
Overload*	5	32F	<200 ms
IEC/IEEE inverse time over-current	1	51	-
Neutral inverse time over-current	1	50N	-

Protections	Alarms	ANSI	Operate time
Earth inverse time over-current	1	50G	-
Busbar over-voltage	3	59P	<50 ms
Busbar under-voltage	4	27P	<50 ms
Busbar over-frequency	3	81O	<50 ms
Busbar under-frequency	4	81U	<50 ms
Emergency stop	1		<200 ms
Low auxiliary supply	1	27DC	
High auxiliary supply	1	59DC	
PV breaker external trip	1		
Synchronisation failure alarms	1/breaker		
Breaker open failure	1/breaker	52BF	
Breaker close failure	1/breaker	52BF	
Breaker position failure	1/breaker	52BF	
Phase sequence error	1	47	
De-load error	1		
Hz/V failure	1		
Not in Auto	1		
Vector shift	1	78	<40 ms
ROCOF (df/dt)	1	81R	<130 ms

**NOTE** \* You can configure these protections for overload or reverse power.

## 2. Compatible products

### 2.1 Touch display unit: TDU

**TDU** is a pre-programmed touch screen display ([www.deif.com/products/tdu-series](http://www.deif.com/products/tdu-series)). The TDU can be used for these controllers:

- iE 150 Generator, Mains, BTB, Battery and Solar
- AGC 150 Generator, Mains and BTB
- ASC 150 Solar and Storage
- AGC-4 Mk II Generator, Mains and BTB
- ASC-4 Solar and Battery
- AGC-4 Generator, Mains and BTB

### 2.2 Power meters

Power measurements are required in single controller applications, as well as in open PMS applications. The controller can receive measurements from a number of power meters, including these DEIF power meters:

- **MIB 8000C** ([www.deif.com/products/mib-8000c](http://www.deif.com/products/mib-8000c))
- **MIC-2 MKII** ([www.deif.com/products/mic-2-mkii](http://www.deif.com/products/mic-2-mkii))
- **MTR-4** ([www.deif.com/products/mtr-4](http://www.deif.com/products/mtr-4))



#### More information

See **Application note, DEIF hybrid controller compatibility** for supported power meters and controllers from other suppliers.

**NOTE** Alternatively, you can use the USW to set up the controller to use Modbus to read values from your power meter. The controller can read P, Q, and up to four digital inputs.

### 2.3 Power measurements from gensets

Power measurements are required in single controller applications, as well as in open PMS applications. The controller can receive measurements from these DEIF genset controllers:

- **iE 150 Generator** ([www.deif.com/products/ie-150/](http://www.deif.com/products/ie-150/))
- **AGC 150 Generator** ([www.deif.com/products/agc-150-generator](http://www.deif.com/products/agc-150-generator))
- **AGC-4 Mk II Genset** ([www.deif.com/products/agc-4-mk-ii](http://www.deif.com/products/agc-4-mk-ii))
- **AGC-4 Genset** ([www.deif.com/products/agc-4](http://www.deif.com/products/agc-4))
- **CGC 400** ([www.deif.com/products/cgc-400](http://www.deif.com/products/cgc-400))



#### More information

See **Application note, DEIF hybrid controller compatibility** for supported power measurements from other genset suppliers.

### 2.4 Power management

You can use these controllers together in a power management system:

- **iE 150 Generator, Mains, BTB, Battery and Solar** ([www.deif.com/products/ie-150](http://www.deif.com/products/ie-150))
- **AGC 150 Generator** ([www.deif.com/products/agc-150-generator](http://www.deif.com/products/agc-150-generator))
- **AGC 150 Mains** ([www.deif.com/products/agc-150-mains](http://www.deif.com/products/agc-150-mains))
- **AGC 150 BTB** ([www.deif.com/products/agc-150-btb](http://www.deif.com/products/agc-150-btb))
- **ASC 150 Solar** ([www.deif.com/products/asc-150-solar](http://www.deif.com/products/asc-150-solar))

- **ASC 150 Storage** ([www.deif.com/products/asc-150-storage](http://www.deif.com/products/asc-150-storage))
- **AGC-4 Mk II Genset, Mains, BTB, Group, and Plant** ([www.deif.com/products/agc-4-mk-ii](http://www.deif.com/products/agc-4-mk-ii))
- **AGC-4 Genset, Mains, BTB, Group, and Plant** ([www.deif.com/products/agc-4](http://www.deif.com/products/agc-4))
- **ASC-4 Solar** ([www.deif.com/products/asc-4-solar](http://www.deif.com/products/asc-4-solar))
- **ASC-4 Battery** ([www.deif.com/products/asc-4-battery](http://www.deif.com/products/asc-4-battery))
- **ALC-4 (Automatic Load Controller)** ([www.deif.com/products/alc-4](http://www.deif.com/products/alc-4))

## 2.5 Open PMS

You can use these controllers together in an open power management system:

- **iE 150 Battery, Solar, Mains** ([www.deif.com/products/ie-150](http://www.deif.com/products/ie-150))
- **ASC 150 Solar** ([www.deif.com/products/asc-150-solar](http://www.deif.com/products/asc-150-solar))
- **ASC 150 Storage** ([www.deif.com/products/asc-150-storage](http://www.deif.com/products/asc-150-storage))
- **AGC 150 Mains** ([www.deif.com/products/agc-150-mains](http://www.deif.com/products/agc-150-mains))
- **ASC-4 Solar** ([www.deif.com/products/asc-4-solar](http://www.deif.com/products/asc-4-solar))
- **ASC-4 Battery** ([www.deif.com/products/asc-4-battery](http://www.deif.com/products/asc-4-battery))
- **AGC-4 Mk II Mains** ([www.deif.com/products/agc-4-mk-ii](http://www.deif.com/products/agc-4-mk-ii))

You can also use **iE 150 Generator**, **AGC 150 Generator**, **AGC-4 Mk II Genset** and/or **AGC-4 Genset** as external gensets. That is, the genset controllers are not part of the open PMS. They can send their power measurements to the open PMS controllers over CAN bus.

## 2.6 Remote monitoring service: Insight

**Insight** is a responsive remote monitoring service ([www.deif.com/products/insight](http://www.deif.com/products/insight)). It includes real-time genset data, a customisable dashboard, GPS tracking, equipment and user management, email and/or SMS alerts, and cloud data management.

## 2.7 Additional inputs and outputs

The controller uses CAN bus communication with these:

- **CIO 116** is a remote input expansion module ([www.deif.com/products/cio-116](http://www.deif.com/products/cio-116)).
- **CIO 208** is a remote output expansion module ([www.deif.com/products/cio-208](http://www.deif.com/products/cio-208)).
- **CIO 308** is a remote I/O module ([www.deif.com/products/cio-308](http://www.deif.com/products/cio-308)).
- **IOM 220** and **IOM 230** each have two analogue outputs. These can be used for general PID control.

## 2.8 Additional operator panel, AOP-2

The controller uses CAN bus communication to the additional operator panel (AOP-2). Configure the controller using M-Logic. On the AOP-2, the operator can then:

- Use the buttons to send commands to the controller.
- See LEDs light up to show statuses and/or alarms.

You can configure and connect two AOP-2s if the controller has the premium software package.

## 2.9 Other equipment

DEIF has a wide variety of other equipment that is compatible. Here are some examples:

- **Synchrosopes**
  - **CSQ-3** ([www.deif.com/products/csq-3](http://www.deif.com/products/csq-3))

- **Battery chargers/power supplies**
  - **DBC-1** ([www.deif.com/products/dbc-1](http://www.deif.com/products/dbc-1))
- **Current transformers**
  - **ASK** ([www.deif.com/products/ask-asr](http://www.deif.com/products/ask-asr))
  - **KBU** ([www.deif.com/products/kbu](http://www.deif.com/products/kbu))
- **Transducers**
  - **MTR-4** ([www.deif.com/products/mtr-4](http://www.deif.com/products/mtr-4))

## 2.10 Controller types

Parameter	Setting	Controller type	Minimum software
9101	Genset unit	Generator Stand-alone controller	Core
	Genset unit	Generator controller	Sync
	Mains unit	Mains controller	Sync
	Bus Tie Breaker unit	BTB controller	Sync
	Genset Hybrid unit	Genset-Solar hybrid controller	Sync
	Engine Drive unit	Engine drive controller	Core
	Remote display unit	Remote display	None
	Battery unit	Battery storage controller	Premium
	Solar unit	Solar controller	Premium
	ATS unit	Automatic transfer switch (open transition)	Core
	ATS unit	Automatic transfer switch (closed transition)	Sync
	Genset PMS lite unit	PMS lite controller	Sync

### Software packages and controller types

The controller software package determines which functions the controller can use.

- **Core**
  - You can change the controller type to any other controller that uses **Core**.
- **Sync**
  - You cannot change the controller type.
- **PM** (power management)
  - You cannot change the controller type.
- **Premium**
  - You can change the controller type to any other controller type.
  - All functions are supported.

You can select the controller type under `Basic settings > Controller settings > Type`.

**NOTE** For the iE 150 Marine controllers, see [www.deif.com/products/ie-150-marine](http://www.deif.com/products/ie-150-marine).



## 3. Technical specifications

### 3.1 Electrical specifications

Power supply	
Power supply range	Nominal voltage: 12 V DC or 24 V DC Operating range: 6.5 to 36 V DC
Voltage withstand	Reverse polarity
Power supply drop-out immunity	0 V DC for 50 ms (coming from min. 6 V DC)
Power supply load dump protection	Load dump protected according to ISO16750-2 test A
Power consumption	5 W typical 12 W max.
RTC clock	Time and date backup

Supply voltage monitoring	
Measuring range	0 V to 36 V DC Max. continuous operating voltage: 36 V DC
Resolution	0.1 V
Accuracy	$\pm 0.35$ V

Voltage measurement	
Voltage range	Nominal range: 100 to 690 V phase-to-phase (above 2000 m derate to max. 480 V)
Voltage withstand	$U_n + 35$ % continuously, $U_n + 45$ % for 10 seconds Measuring range of nominal: 10 to 135 % Low range, nominal 100 to 260 V: 10 to 351 V AC phase-to-phase High range, nominal 261 to 690 V: 26 to 932 V AC phase-to-phase
Voltage accuracy	$\pm 1$ % of nominal within 10 to 75 Hz $+1/-4$ % of nominal within 3.5 to 10 Hz
Frequency range	3.5 to 75 Hz
Frequency accuracy	$\pm 0.01$ Hz within 60 to 135 % of nominal voltage $\pm 0.05$ Hz within 10 to 60 % of nominal voltage
Input impedance	4 M $\Omega$ /phase-to-ground, and 600 k $\Omega$ phase/neutral

Current measurement	
Current range	Nominal: -/1 A and -/5 A Range: 2 to 300 %
Number of CT input	4
Max. measured current	3 A (-/1 A) 15 A (-/5 A)
Current withstand	7 A continuous 20 A for 10 seconds 40 A for 1 second
Current accuracy	From 10 to 75 Hz: <ul style="list-style-type: none"> <li><math>\pm 1</math> % of nominal from 2 to 100% current</li> <li><math>\pm 1</math> % of measured current from 100 to 300 % current</li> </ul>

Current measurement	
	From 3.5 to 10 Hz: <ul style="list-style-type: none"> <li>• +1/-4 % of nominal from 2 to 100 % current</li> <li>• +1/-4 % of measured current from 100 to 300 % current</li> </ul>
Burden	Max. 0.5 VA

Power measurement	
Accuracy power	±1 % of nominal within 35 to 75 Hz
Accuracy power factor	±1 % of nominal within 35 to 75 Hz

Digital inputs	
Number of inputs	12 x digital inputs Negative switching
Maximum input voltage	+36 V DC with respect to plant supply negative
Minimum input voltage	-24 V DC with respect to plant supply negative
Current source (contact cleaning)	Initial 10 mA, continuous 2 mA

DC outputs	
Number of 3 A outputs	2 x outputs 15 A DC inrush and 3 A continuous, supply voltage 0 to 36 V DC Endurance tested according to UL/ULC6200:2019 1.ed: 24 V, 3 A, 100000 cycles (with an external freewheeling diode)
Number of 0.5 A outputs	10 x outputs 2 A DC inrush and 0.5 A continuous, supply voltage 4.5 to 36 V DC
Common	12/24 V DC

Analogue inputs	
Number of inputs	4 x analogue inputs
Electrical range	Configurable as: <ul style="list-style-type: none"> <li>• Negative switching digital input</li> <li>• 0 V to 10 V sensor</li> <li>• 4 mA to 20 mA sensor</li> <li>• 0 Ω to 2.5 kΩ sensor</li> </ul>
Accuracy	Current: <ul style="list-style-type: none"> <li>• Accuracy: ±20 uA ±1.00 % rdg</li> </ul> Voltage: <ul style="list-style-type: none"> <li>• Range: 0 to 10 V DC</li> <li>• Accuracy: ±20 mV ±1.00 % rdg</li> </ul> RMI 2-wire LOW: <ul style="list-style-type: none"> <li>• Range: 0 to 800 Ω</li> <li>• Accuracy: ±2 Ω ±1.00 % rdg</li> </ul> RMI 2-wire HIGH: <ul style="list-style-type: none"> <li>• Range: 0 to 2500 Ω</li> <li>• Accuracy: ±5 Ω ±1.00 % rdg</li> </ul>

Analogue outputs	
Output type	Isolated DC voltage output
Voltage range	-10 to +10 V DC
Resolution	Less than 1 mV
Maximum voltage	Output 52: $\pm 550$ V Output 55: $\pm 3$ kV
Minimum load	500 $\Omega$
Accuracy	$\pm 1$ % of setting value

Display unit	
Type	Graphical display screen (monochrome)
Resolution	240 x 128 pixels
Navigation	Five-key menu navigation
Log book	Data log and trending function
Language	Multi-language display

## 3.2 Environmental specifications

Operation conditions	
Operating temperature (incl. display screen)	-40 to +70 °C (-40 to +158 °F)
Storage temperature (incl. display screen)	-40 to +85 °C (-40 to +185 °F)
Accuracy and temperature	Temperature coefficient: 0.2 % of full scale per 10 °C
Operating altitude	0 to 4000 m with derating
Operating humidity	Damp Heat Cyclic, 20/55 °C at 97 % relative humidity, 144 hours. To IEC 60255-1 Damp Heat Steady State, 40 °C at 93 % relative humidity, 240 hours. To IEC 60255-1
Change of temperature	70 to -40 °C, 1 °C / minute, 5 cycles. To IEC 60255-1
Protection degree	IEC/EN 60529 <ul style="list-style-type: none"> <li>IP65 (front of module when installed into the control panel with the supplied sealing gasket)</li> <li>IP20 on terminal side</li> </ul>
Vibration	Response: <ul style="list-style-type: none"> <li>10 to 58.1 Hz, 0.15 mmpp</li> <li>58.1 to 150 Hz, 1 g. To IEC 60255-21-1 (Class 2)</li> </ul> Endurance: <ul style="list-style-type: none"> <li>10 to 150 Hz, 2 g. To IEC 60255-21-1 (Class 2)</li> </ul> Seismic vibration: <ul style="list-style-type: none"> <li>3 to 8.15 Hz, 15 mmpp</li> <li>8.15 to 35 Hz, 2 g. To IEC 60255-21-3 (Class 2)</li> </ul>
Shock	10 g, 11 ms, half sine. To IEC 60255-21-2 Response (Class 2) 30 g, 11 ms, half sine. To IEC 60255-21-2 Withstand (Class 2) 50 g, 11 ms, half sine. To IEC 60068-2-27, test Ea Tested with three impacts in each direction in three axes (total of 18 impacts per test)

Operation conditions	
Bump	20 g, 16 ms, half sine IEC 60255-21-2 (Class 2) Tested with 1000 impacts in each direction on three axes (total of 6000 impacts per test)
Galvanic separation	CAN port 2 (CAN B): 550 V, 50 Hz, 1 minute RS-485 port 1: 550 V, 50 Hz, 1 minute Ethernet: 550 V, 50 Hz, 1 minute Analogue output 51-52 (GOV): 550 V, 50 Hz, 1 minute Analogue output 54-55 (AVR): 3000 V, 50 Hz, 1 minute Note: No galvanic separation on CAN port 1 (CAN A) and RS-485 port 2
Safety	Installation CAT. III 600 V Pollution degree 2 IEC/EN 60255-27
Flammability	All plastic parts are self-extinguishing to UL94-V0
EMC	IEC/EN 60255-26

### 3.3 UL/cUL Listed

Requirements	
Installation	To be installed in accordance with the NEC (US) or the CEC (Canada)
Enclosure	A suitable type 1 (flat surface) enclosure is required Unventilated/ventilated with filters for controlled/pollution degree 2 environment
Mounting	Flat surface mounting
Connections	Use 90 °C copper conductors only
Wire size	AWG 30-12
Terminals	Tightening torque: 5-7 lb-in.
Current transformers	Use Listed or Recognized isolating current transformers
Communication circuits	Only connect to communication circuits of a listed system/equipment

### 3.4 Communication

Communication	
CAN A	<b>CAN port</b> You can connect these in a daisy chain (and operate them at the same time): <ul style="list-style-type: none"> <li>• CIO 116, CIO 208, and CIO 308</li> <li>• IOM 220 and IOM 230</li> </ul> Data connection 2-wire + common, or 3-wire Not isolated External termination required (120 Ω + matching cable)
CAN B	<b>CAN port - PMS</b> Used for: <ul style="list-style-type: none"> <li>• Power management communication</li> <li>• AOP-2</li> </ul> Data connection 2-wire + common, or 3-wire Isolated External termination required (120 Ω + matching cable) PMS 125 kbit and 250 kbit
RS-485 Port 1	Used for:

## Communication

	<ul style="list-style-type: none"> <li>• Modbus master to PV</li> <li>• Modbus master to weather station</li> <li>• Power meters</li> <li>• Modbus RTU, PLC, SCADA, Remote monitoring (Insight)</li> </ul> <p>Data connection 2-wire + common, or 3-wire Isolated External termination required (120 <math>\Omega</math> + matching cable) 9600 to 115200</p>
RS-485 Port 2	<p>Used for:</p> <ul style="list-style-type: none"> <li>• Modbus master to PV</li> <li>• Modbus master to weather station</li> <li>• Power meters</li> <li>• Modbus RTU, PLC, SCADA, Remote monitoring (Insight)</li> </ul> <p>Data connection 2-wire + common, or 3-wire Not isolated External termination required (120 <math>\Omega</math> + matching cable) 9600 to 115200</p>
RJ45 Ethernet	<p>Used for:</p> <ul style="list-style-type: none"> <li>• Modbus master to PV</li> <li>• Modbus master to weather station</li> <li>• Modbus to PLC, SCADA, and so on</li> <li>• NTP time synchronisation with NTP servers</li> <li>• Power management system (PMS) communication between AGC 150, ASC 150, and/or iE 150 controllers</li> <li>• PC utility software</li> </ul> <p>Isolated Auto detecting 10/100 Mbit Ethernet port</p>
USB	Service port (USB-B)

## 3.5 Approvals

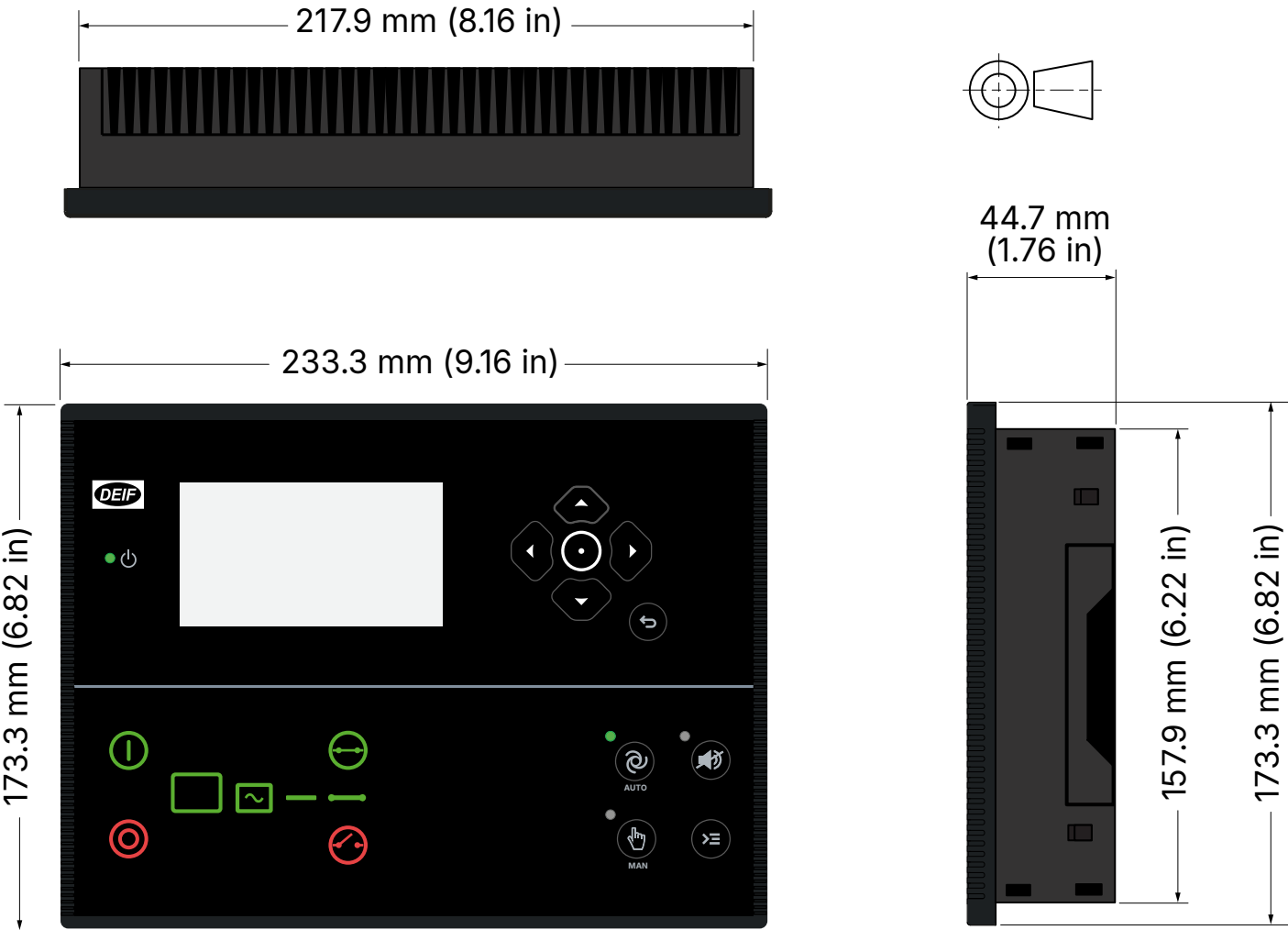
### Standards

CE

UL/ULC Listed to UL6200:2019 1<sup>st</sup> edition controllers for use in Power Production

**NOTE** Refer to [www.deif.com](http://www.deif.com) for the most recent approvals.

3.6 Dimensions



Dimensions and weight	
Dimensions	Length: 233.3 mm (9.16 in) Height: 173.3 mm (6.82 in) Depth: 44.7 mm (1.76 in)
Panel cutout	Length: 218.5 mm (8.60 in) Height: 158.5 mm (6.24 in) Tolerance: ± 0.3 mm (0.01 in)
Max. panel thickness	4.5 mm (0.18 in)
Mounting	UL/cUL Listed: Type complete device, open type 1 UL/cUL Listed: For use on a flat surface of a type 1 enclosure
Weight	0.79 kg

3.7 Spare parts and accessories

Name	Details	Included with controller
Connector kit	A set of terminal blocks.	●
Fixing clamps	Clamps for mounting the controller.	●
J4	PC Ethernet cable crossed, 3 m. UL94 (V1) approved. Weight 0.2 kg (0.4 lbs).	
J7	PC cable for utility software (USB), 3 m. UL94 (V1) approved. Weight 0.2 kg (0.4 lbs).	

## 4. Legal information

### Disclaimer

DEIF A/S reserves the right to change any of the contents of this document without prior notice.

The English version of this document always contains the most recent and up-to-date information about the product. DEIF does not take responsibility for the accuracy of translations, and translations might not be updated at the same time as the English document. If there is a discrepancy, the English version prevails.

### Copyright

© Copyright DEIF A/S. All rights reserved.

### 4.1 Software version

This document is based on iE 150 software version 1.35.