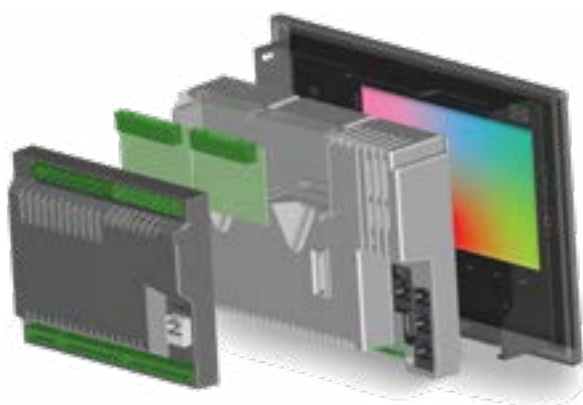


# iE 250 MARINE

Power to create every solution

A versatile and flexible intelligent Energy controller. Enables you to tailor the installation for your marine application.

An extensive range of control, protection and supervision features. Applications range from genset control and protection to engineered power management solutions with our market-leading fuel optimisation technology.



## Software packages

Build a software package with only the features you need.

### Core software package

iE 250 MARINE comes with the core software package with asset protections including load sharing and synchronisation.

### Power management software package

The power management software package allows iE 250 MARINE controllers to work together as one multi-master power management system.



## Main values

### iE 250 MARINE conforms to marine requirements

#### Easy and user-friendly interface

- Easy control with flexible dashboards.
- Adaptive mimics.
- Configurable buttons.
- 7" colour touch screen that can be used in combination with buttons.

#### Full support for existing applications

- Full power management compatibility with other AGC controllers from DEIF.

#### Remote display version

- A second display unit for a controller.

#### Event log

- The controller stores up to 2000 log entries and discards the oldest using FIFO when full.

#### PLC functions

- Programmable functions with CustomLogic.
- CODESYS add-on available.

#### Fast short-cut button

- Configurable shortcut feature gives the user easy access to frequently used functions.

#### Flexible

- Modular build-up.
- Base mount or front mount.
- Plug-in modules.
- Bi-directional inputs/outputs.



Improve  
Tomorrow

DEIF A/S  
Frisenborgvej 33  
DK-7800 Skive

+45 9614 9614  
info@deif.com  
deif.com

# Flexible product

## Flexible adaptive mimic

The latest generation of adaptive mimic allows the controller to adapt to any application.

### GENSET controller application



### HYBRID controller application



## Mount anywhere

A truly flexible approach to how and where you can mount the controller with or without display.



### Front mounted

Display and controller easily installed at the front.



### Base mounted with remote display

Mount the controller at the base and the display located further away.



### Base mounted

Mount the controller at the base and the display located nearby.

## Extensive input/output possibilities

Direct plug-in input/output modules and expansion slots.

Plug-in-modules

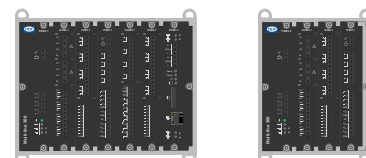
- Digital I/O (8 bi-directional channels)
- Analogue I/O (4 bi-directional channels)
- Analogue load share



Measurement Input and Output module (MIO) has bidirectional digital and analogue terminals. Smart flexibility allows you to use them for what you need.



Full support for the range of IE 650 racks and modules.



Full support for the ML 300 racks R4.1 and R7.1 with a range of IOM3.x modules.



Improve  
Tomorrow

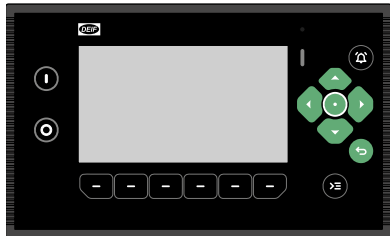
DEIF A/S  
Frisenborgvej 33  
DK-7800 Skive

+45 9614 9614  
info@deif.com  
deif.com

# Easy to use

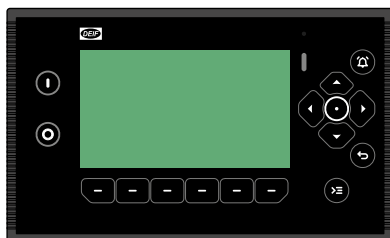
## Easy control

Flexible control for faster and easier operation.



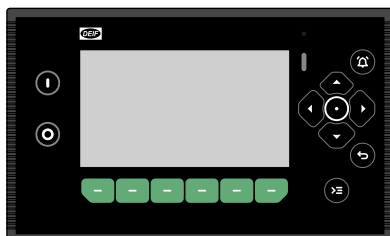
### 6-way navigation

Button navigation for control, selection, and entering information.



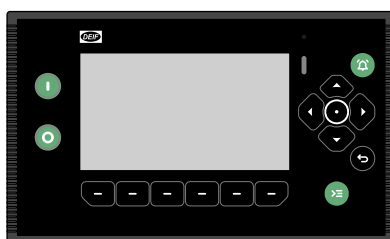
### Touch screen

Easy to use touch interface for most functions. This feature can also be disabled.



### Configurable buttons

Six configurable buttons, allow direct functions from pages.

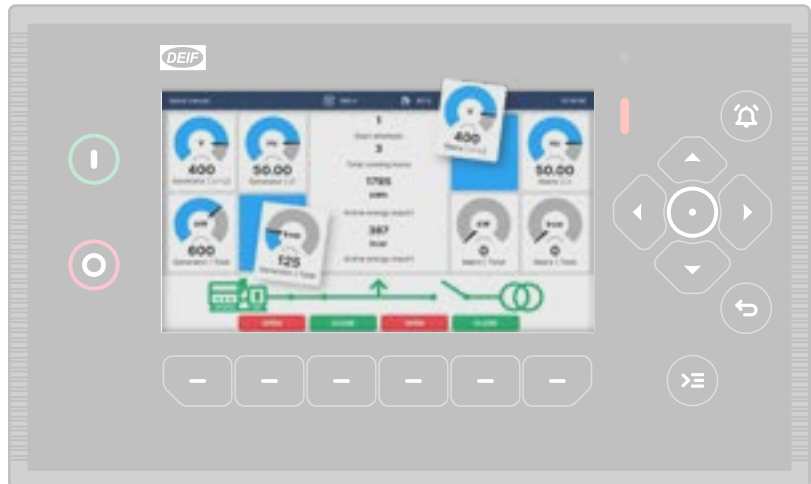


### Dedicated buttons

Dedicated buttons for start, stop of the asset, Notification centre and Control centre.

## Flexible dashboards

Easy to change dashboards to fit your own needs.



## Modern user interface

Fast, easy to use, and intuitive navigation system.



## Cyber security

Cyber security conforms to IACS UR E27 requirements, certificate pending.



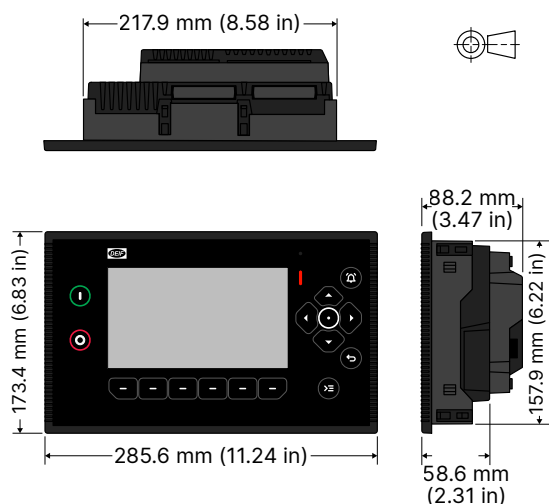
Improve  
Tomorrow

DEIF A/S  
Frisenborgvej 33  
DK-7800 Skive

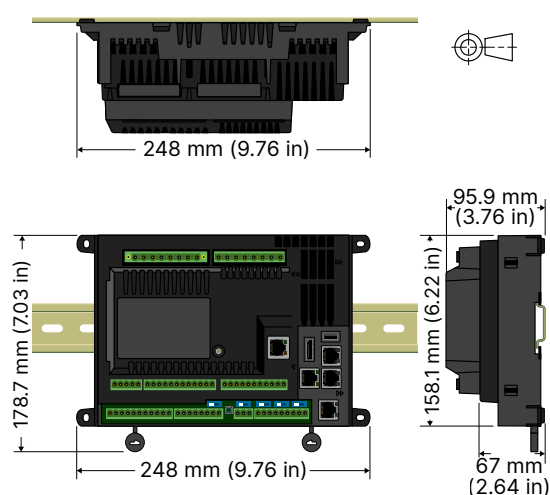
+45 9614 9614  
info@deif.com  
deif.com

## Dimensions and technical specifications

### Front mounted



### Rear mounted



### Power supply

- Power supply voltage (nominal): 12 V DC or 24 V DC
- Power supply voltage (operating): 6.5 V DC to 36 V DC
- Load-dump protection: Protected according to ISO16750-2 test A
- Power consumption: 15 W typical, 20 W maximum

### Operating conditions

- Operating temperature: -30 to +70 °C (-22 to +158 °F)
- Storage temperature: -30 to +80 °C (-22 to +176 °F)

### Measuring

- Nominal voltage: 100 to 690 V AC, phase-to-phase
- Voltage measurement range: 5 to 931.5 V AC, phase-to-phase

- Voltage accuracy:  $\pm 0.5\%$  or  $\pm 0.5$  V AC
- Nominal current: 1 or 5 A AC from current transformer
- Current measurement range: 0.005 to 20 A AC
- Current accuracy:  $\pm 0.5\%$  or  $\pm 5$  mA AC
- Frequency measurement range: 10 to 75 Hz
- Power accuracy:  $\pm 0.5\%$  or  $\pm 0.5\%$  of nominal

### Approvals

- CE
- UL/cUL Listed to - UL/ULC6200:2019 1.ed. Controllers for Use in Power Production

**IE 250 MARINE**  
Read here



Improve  
Tomorrow

DEIF A/S  
Frisenborgvej 33  
DK-7800 Skive

+45 9614 9614  
info@deif.com  
deif.com